

## COMPANY CASE STUDY

New and improved communications for Bedales School, Hampshire.

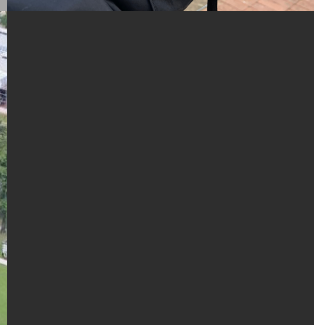


### PROJECT OVERVIEW

Bedales School chose 2826 Ltd to supply, install and maintain a Hytera DMR digital radio solution. Schools, colleges and universities are busy environments often spread over large sites. Allowing pupils to safely and efficiently move around the site, as well as ensuring staff are appropriately connected with one another, can be a challenge when it comes to communication. Bedales School's 120 acre site is home to three campuses: Dunannie (the Pre-pre), Dunhurst (the Prep) and Bedales (the senior school.)

***"Due to our large rural location with minimal phone signal, we required a simple way to maintain effective communication between staff across the three school sites for day-to-day operations and in the event of a failure of our internal phone system. The Hytera radio system allows instant communication across our entire site which is isolated from our IT and Telephony network. With a battery backup, we can still communicate effectively even in the event of a complete power failure. We're extremely happy with the Hytera solution and the services provided by our partner 2826 Ltd." S. Phillips, Network Manager.***

The system will be used across the school's grounds which include girls' and boys' boarding houses and an array of sporting facilities incorporating an indoor swimming pool, multigym, 8 indoor badminton courts, full size floodlit AstroTurf and 17 acres of sports fields. The Hytera DMR system consists of a pair of UHF RD625 dual slot base station repeaters with battery backup offering seamless coverage across the entire estate. Hytera PD785 keypad and display handholds were chosen for their IP67 robustness, long battery life and colour display and keypad allowing ease of use of functions such as individual, group and emergency calls, text messaging and loan worker alarms.



## COMPANY CASE STUDY

New and improved communications for Bedales School, Hampshire.



### AT A GLANCE

#### Challenges

- Minimal phone signal
- 3 x separate campuses across 120 acre site
- Power outages

#### Benefits

- Long battery life
- Simplicity for users
- Individual, group and emergency calling functions

### OBJECTIVES

Bedales School's 120 acre site is home to three campuses: Dunannie (the Pre-pre), Dunhurst (the Prep) and Bedales (the senior school). They required a radio solution that would ensure that staff could be appropriately connected with one another whilst allowing pupils to safely and efficiently move around the site. The system will be used across the school's grounds including girls' and boys' boarding houses and an array of sporting facilities including 17 acres of sports fields.

### SOLUTIONS

The Hytera DMR system consists of a pair of UHF RD625 dual slot base station repeaters with battery backup offering seamless coverage across the entire estate. Hytera PD785 keypad and display handhelds were chosen for their IP67 robustness, long battery life and color display and keypad allowing ease of use of functions such as individual, group and emergency calls, text messaging and loan worker alarms.

### BENEFITS

#### Seamless coverage

UHF RD625 dual slot base station repeaters with battery backup offering seamless coverage across the entire estate.

#### Ease of use

Long battery life and colour display and keypad allows ease of use including individual, group and emergency calls.

#### Simplicity

Maintenance of effective communication between staff across the three school sites in the event of an internal phone system failure.

#### Reliability

Instant communications across the entire site (isolated from IT and Telephony networks.)



*"The Hytera radio system allows instant communication across our entire site which is isolated from our IT and Telephony network. With a battery backup, we can still communicate effectively even in the event of a complete power failure. We're extremely happy with the Hytera solution and the services provided by our partner 2826 Ltd."*

**S. Phillips**  
**Network Manager**